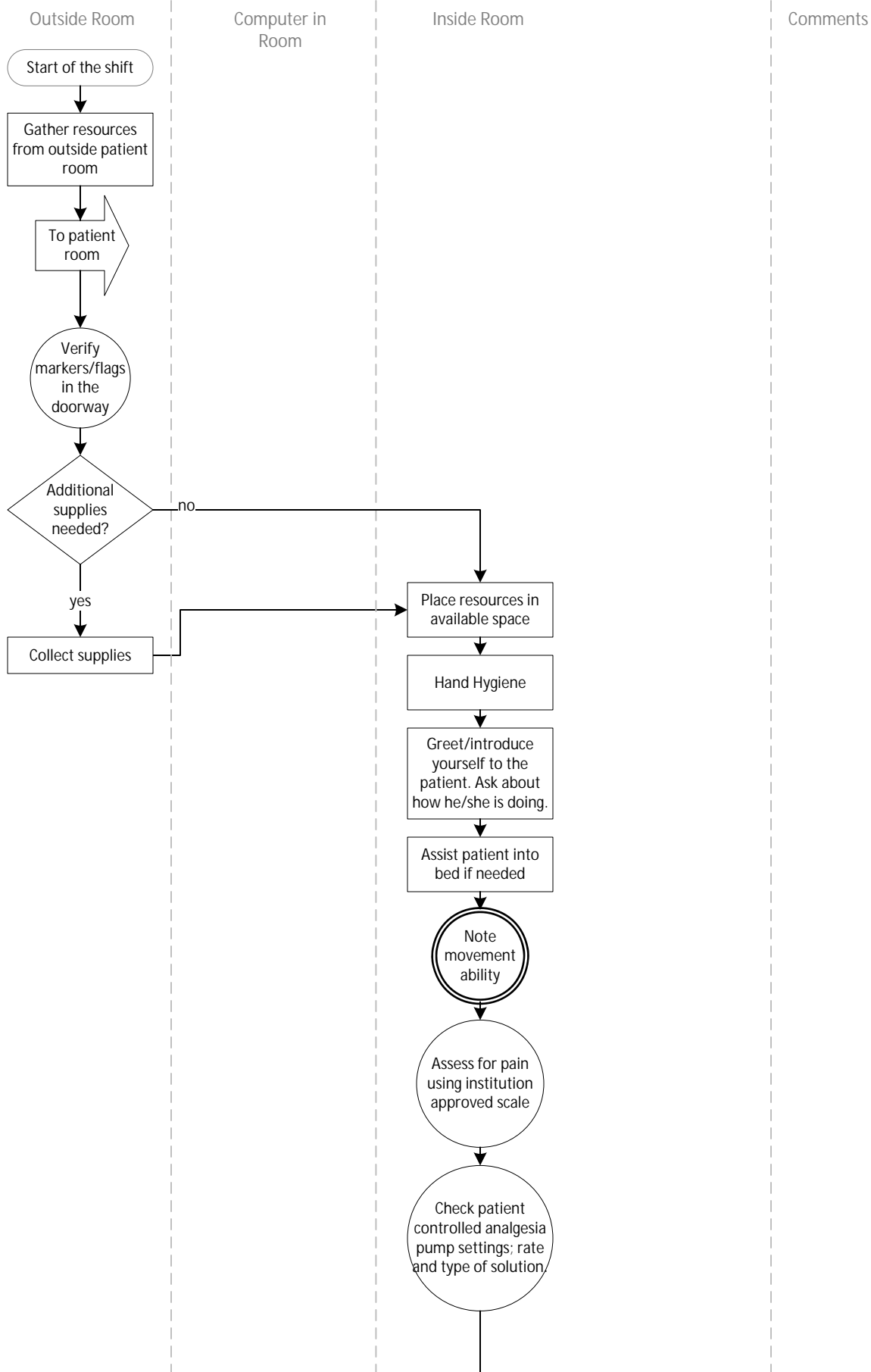
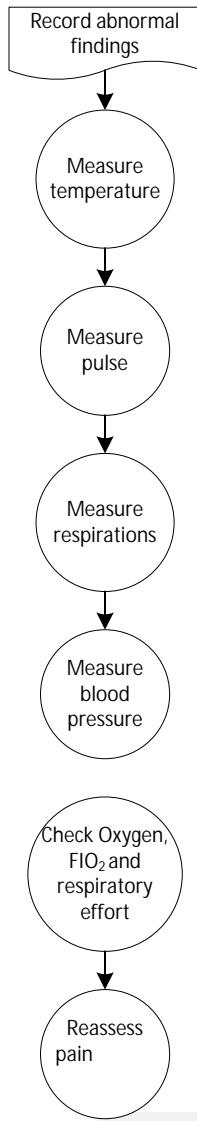


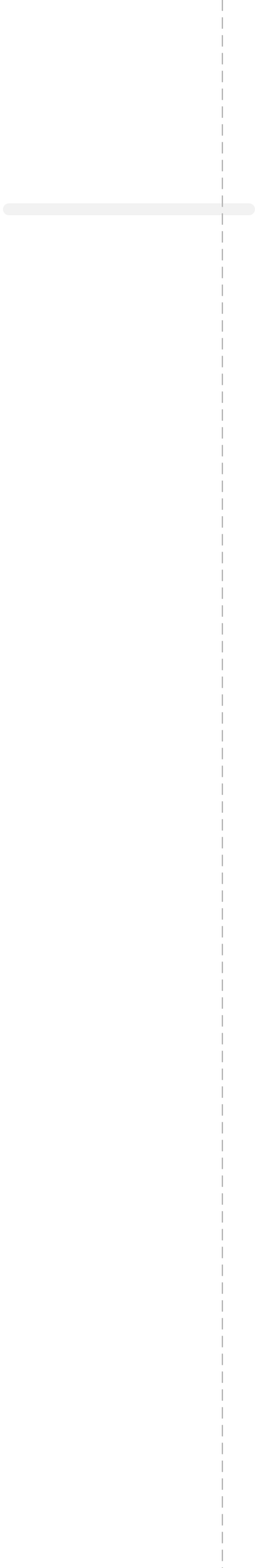
# Assessment Process

August 3, 2015





*Document in piece of paper before inputting data in computer*



Check fitting of  
oxygen mask/  
nasal prongs,  
if needed

↓

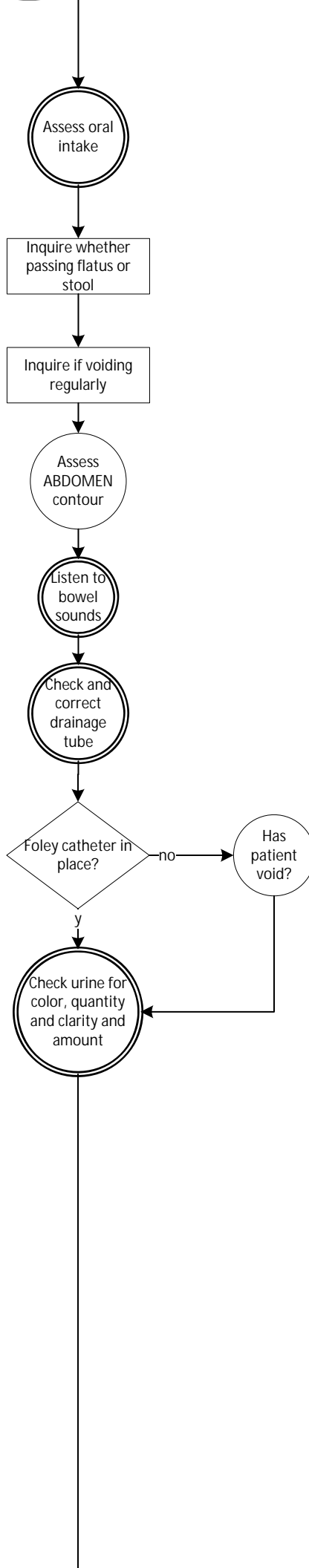
Check pretibial edema using institution approved scale

Palpate posterior tibial or dorsalis pedis

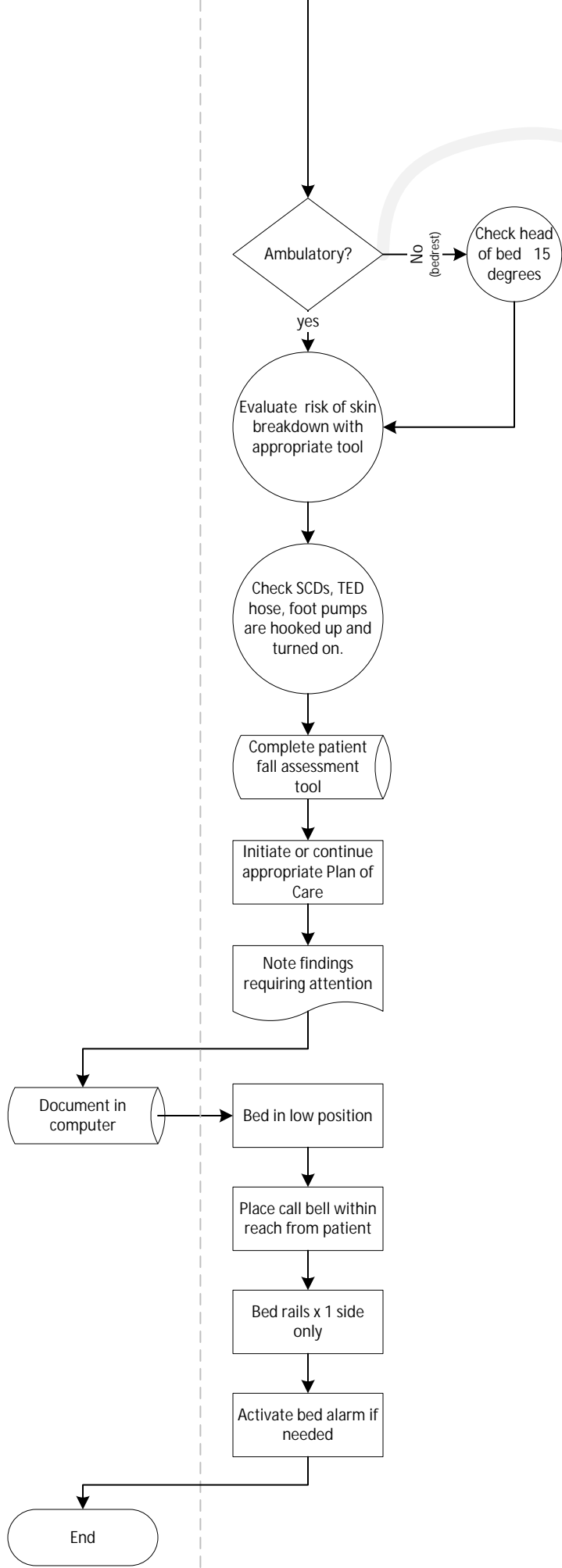
Note skin color

↓





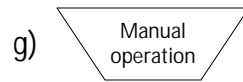
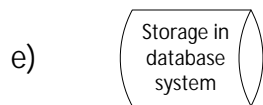
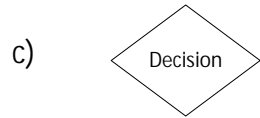
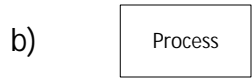
*Needs to know diet orders. Do they check it right before this step or they are supposed to know this before coming to the room?*



*Needs to know activity orders. Do they check it right before this step or they are supposed to know this before coming to the room?*

*Safety precautions before leaving the room*

Adapted from: Jarvis, C. (2012). Physical Examination and Health Assessment (6th ed.). St Louis, MO: Elsevier Saunders.



Evaluate the quality of the output compared to a standard, often using a measuring device.

Using information from the process to make a decision or determine future actions. Often followed by a decision or by a documentation.