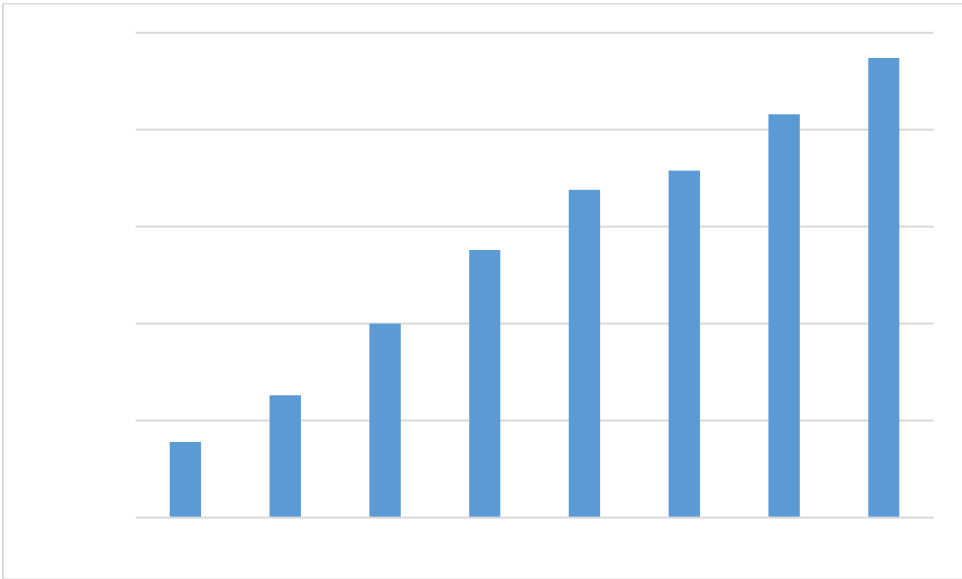
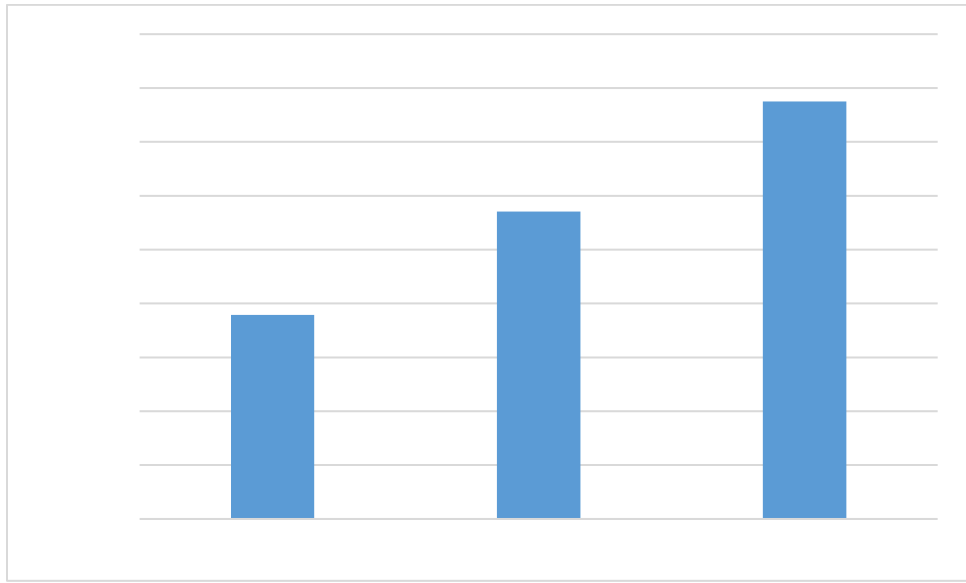
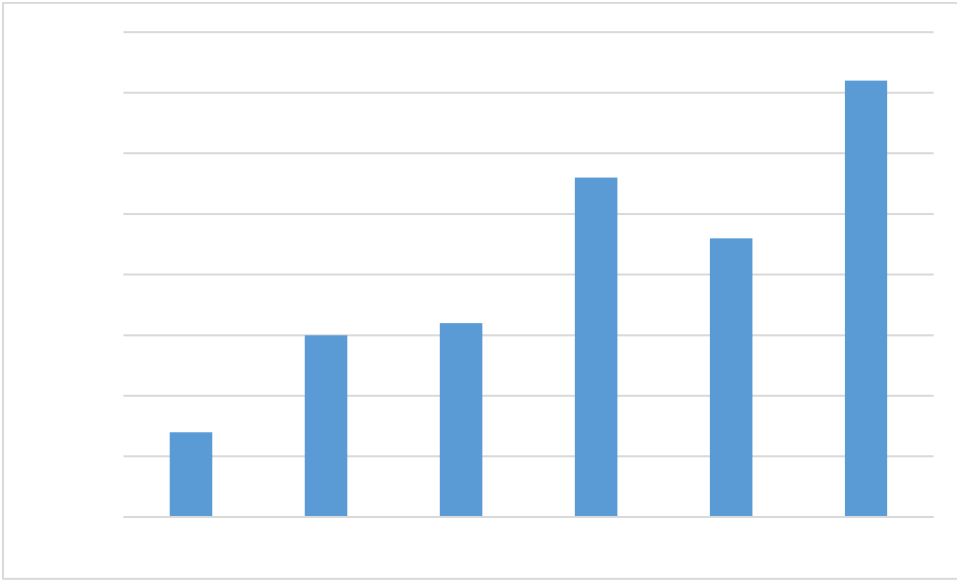


2. Describe the quality of the program/certificate as assessed by the strengths, productivity, and qualifications of the faculty in terms of SCH, majors, graduates, and scholarly/creative activity (refer to instructions in the WSU Program Review document for more information on completing this section).







○

○

○

○

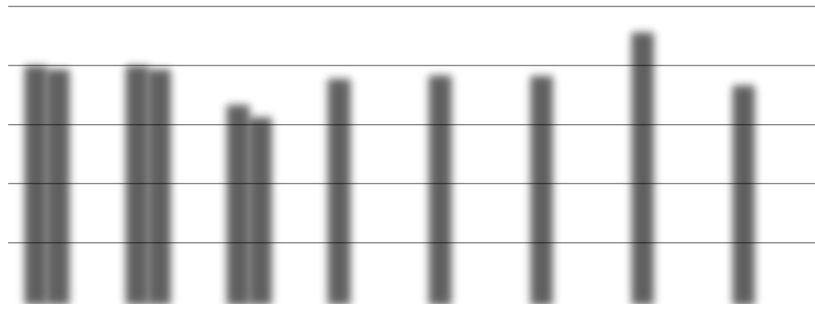
○

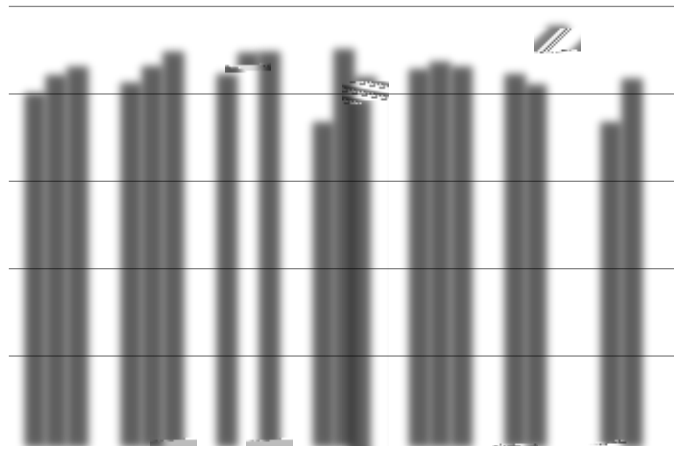
Academic Program/Certificate: Analyze the quality of the program as assessed by its curriculum and impact on students for each program (if more than one). Attach updated program assessment plan (s) as an appendix (

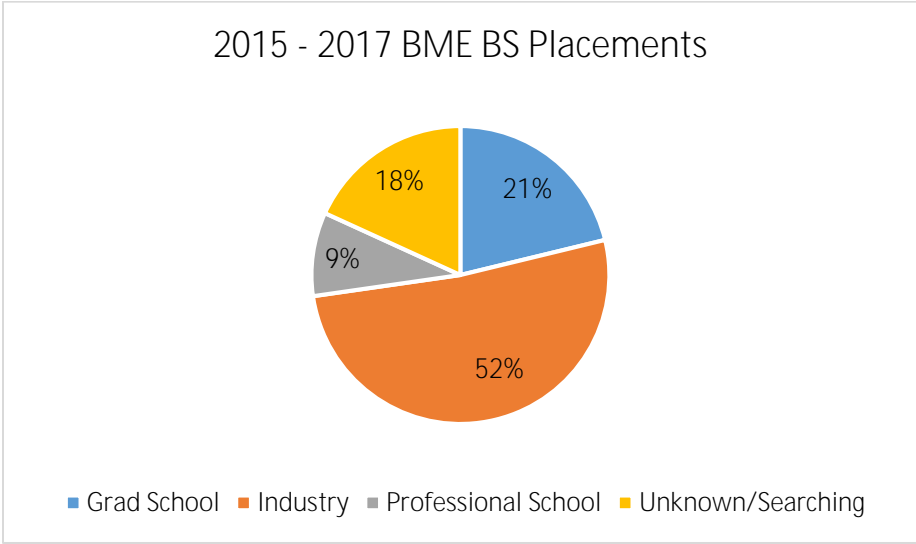
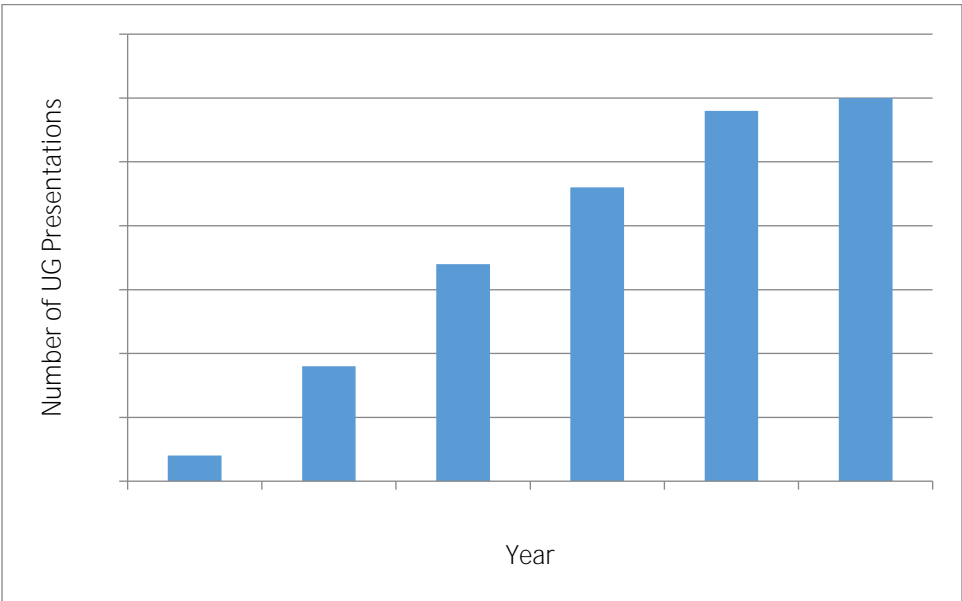
--	--	--	--	--

--	--	--	--	--

Analysis

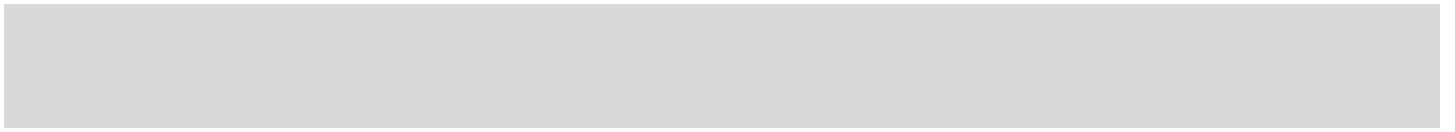






4. Analyze the student need and employer demand for the program/certificate. Complete for each program if appropriate (refer to instructions in the WSU Program Review document for more information on completing this section).





6. Report on the Program's/certificate's goal (s) from the last review. List the goal (s), data that may have been collected to support the goal, and the outcome. Complete for each program if appropriate (refer to instructions in the WSU Program Review document for more information on completing this section).

(For Last 3 FYs)	Goal (s)	Assessment Data Analyzed	Outcome
	Development of a graduate program		A MS in BME program started in January 2017, and currently has 7 MS students enrolled
	Increase co-op and internship placements for BME students	Data from the WSU Career Development Center	2015 6 placements 2016 13 placements 2017 23 placements
	Increase undergraduate research for BME students	Number of undergraduate research presentations at research conferences and forums	2015 23 presentations 2016 29 presentations 2017 30 presentations
	Increase research dissemination of BME faculty	Track journal article publications in annual faculty activity record	2012-2014: 0.94 journal publications per faculty 2015-2017: 1.83

-
-
-
-

Appendix 1. Biomedical Engineering Faculty Mentoring, Workshops and Professional Development Activities

